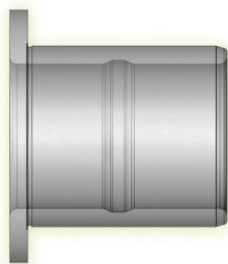


Flange Bushes

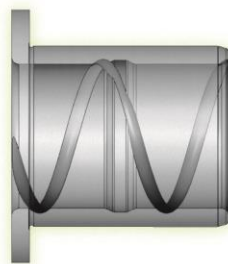
Sibo also offers **flanged bushings**, which are special bushes with a flange (or collar) that are mainly used in the jointed parts of rear excavators.

Sibo manufactures these bushes in all the types offered for standard bushes and in the special versions. Special versions upon customer request are also available, such as front spiders.

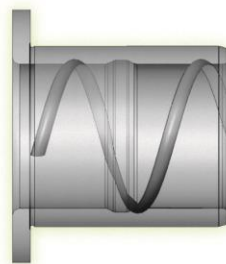
Inside Groove with Spiroil



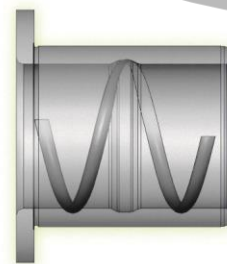
L GI



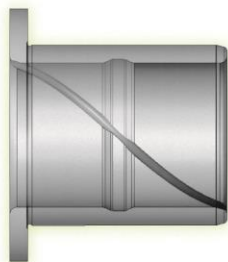
G SP.U



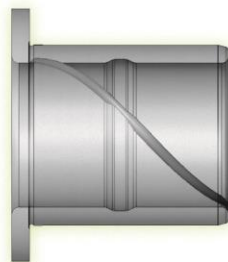
H SP.U 1P



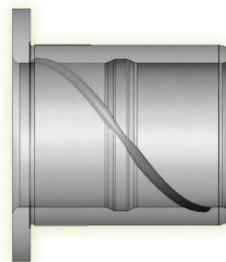
I SP.NU



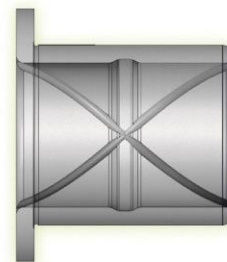
PE 1/0 U



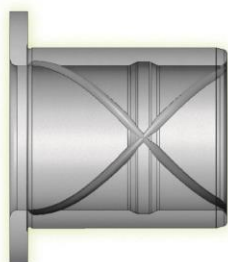
PF 1/0 U 1P



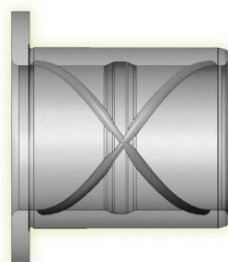
PD 1/0 NU



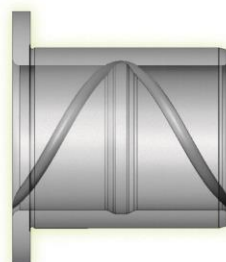
P 2/0 U



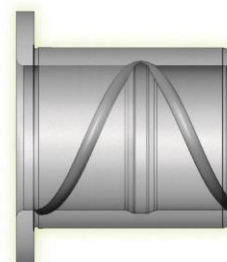
O 2/0 U 1P



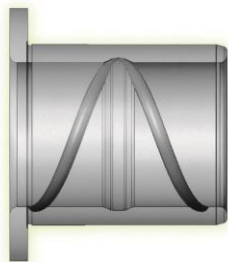
OE 2/0 NU



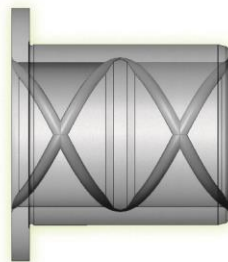
TE 1/8 U



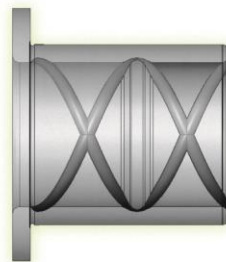
TH 1/8 U 1P



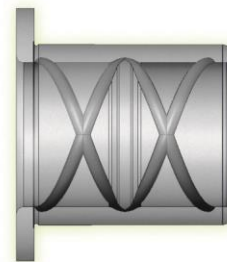
TF 1/8 NU



T 2/8 U



TI 2/8 U 1P

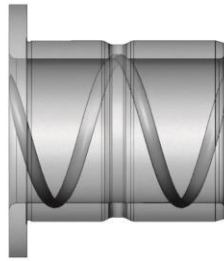


TG 2/8 NU

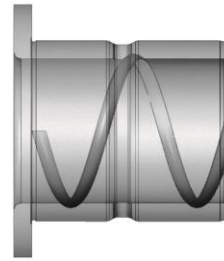
Outside groove, holes with
spiroil



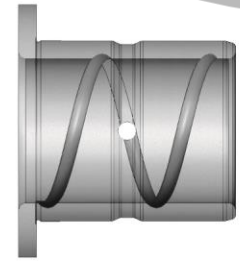
R GE



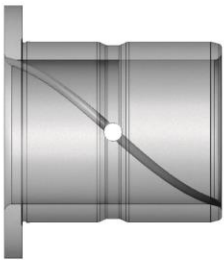
VB SP.U



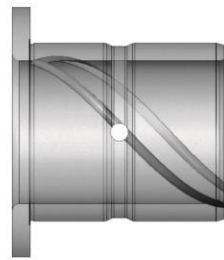
VC SP.U 1P



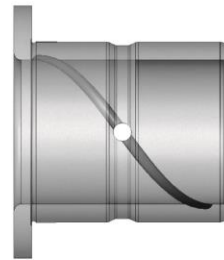
VD SP.NU



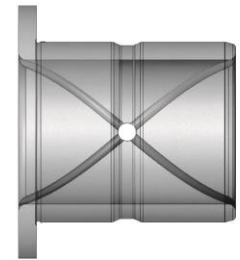
CF 1/0 U



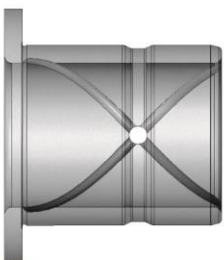
DA 1/0 U 1P



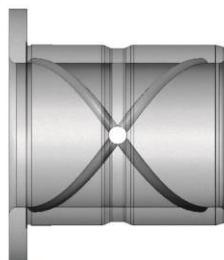
CD 1/0 NU



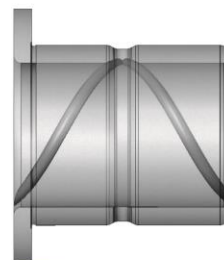
CG 2/0 U



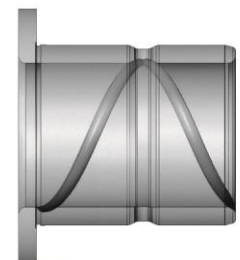
DB 2/0 U 1P



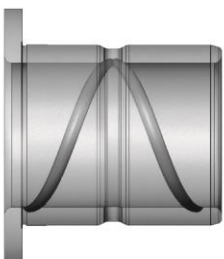
CE 2/0 NU



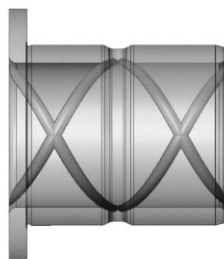
SA 1/8 U



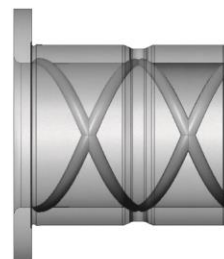
SD 1/8 U 1P



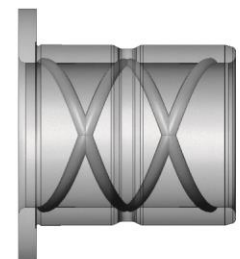
S 1/8 NU



SF 2/8 U



SE 2/8 U1P

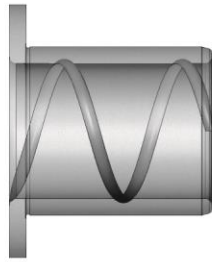


SG 2/8 NU

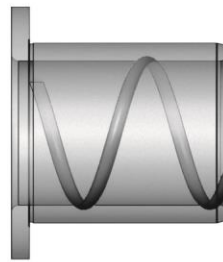
Plain with spiroil



A LISCIA



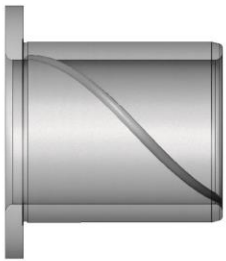
B SP.U



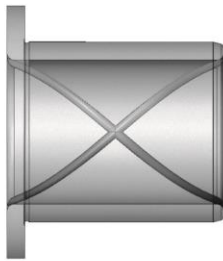
C SP.U 1P



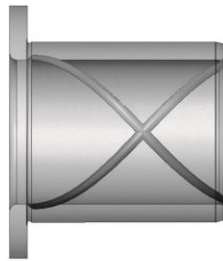
CB 1/0 U



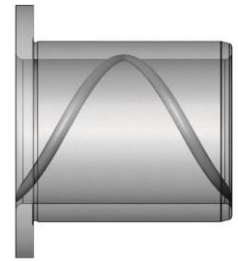
CC 1/0 U 1P



Q 2/0 U



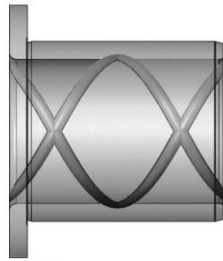
QB 2/0 U 1P



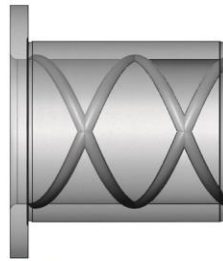
VA 1/8 U



V 1/8 U 1P

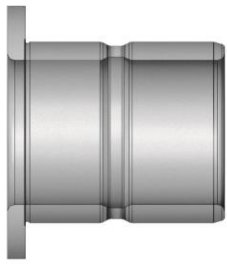


ZA 2/8 U

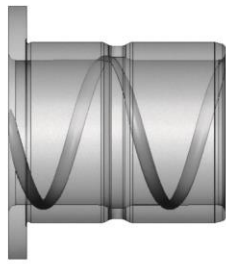


Z 2/8 U 1P

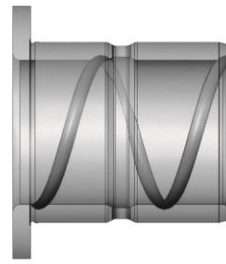
Grooves, Holes with spiroil



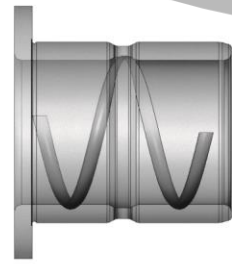
D GF



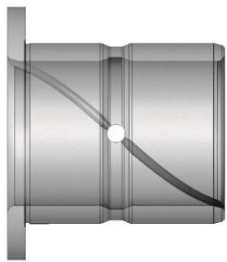
E SP.U



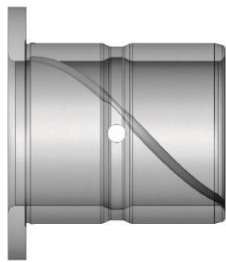
F SP.U



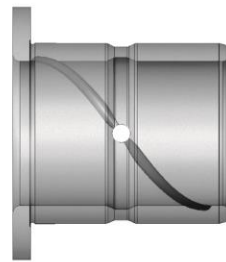
EA SP.NU



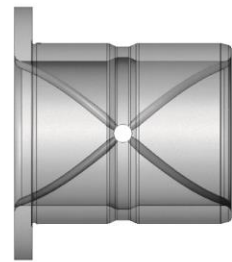
EC 1/0 U



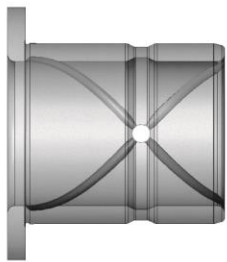
ED 1/0 U 1P



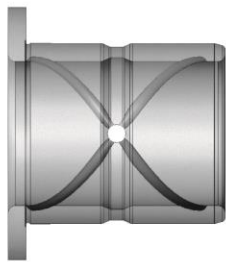
EB 1/0 NU



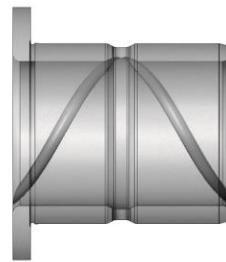
N 2/0 U



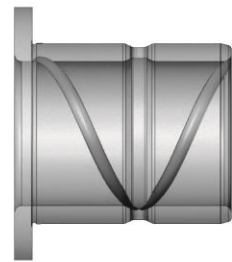
EE 2/0 U 1P



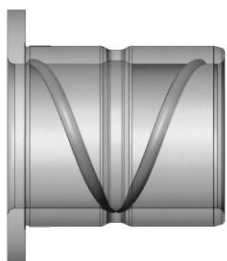
M 2/0 NU



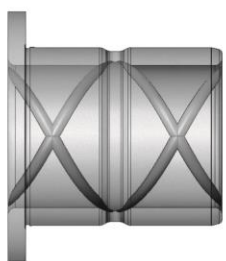
GC 1/8 U



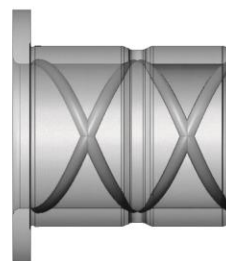
UC 1/8 U 1P



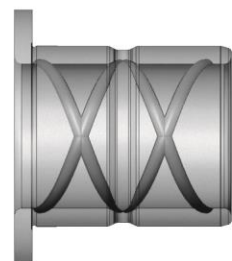
UA 1/8 NU



GB 2/8 U



UB 2/8 U 1P



U 2/8 NU