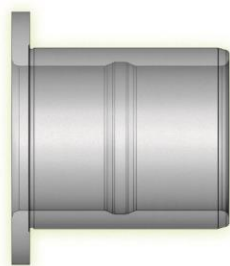


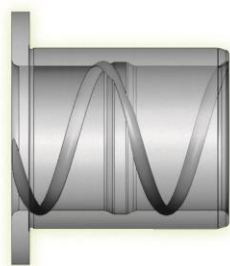
Boccole a Battuta

Sibo, ha tra le sue linee di prodotto anche le **boccole a battuta**, particolari boccole con flangia (o collare) che sono utilizzate principalmente negli snodi dei retro escavatori. Sibò è in grado di produrre queste boccole in ogni tipologia proposta per le boccole standard e ad esecuzione speciale. È possibile inoltre fare delle esecuzioni su richiesta del cliente come ragnature frontali.

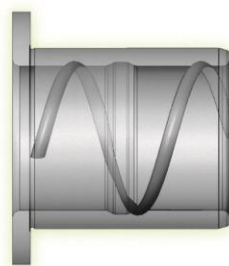
Gola Interna Fori Ragnata



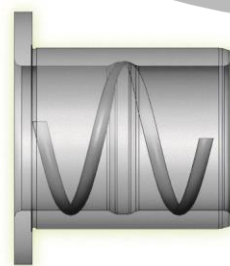
L GI



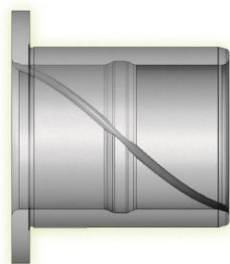
G SP.U



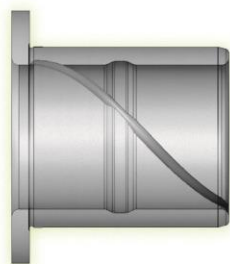
H SP.U 1P



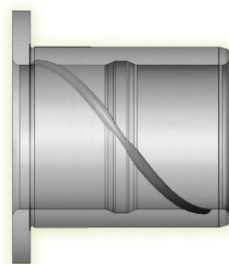
I SP.NU



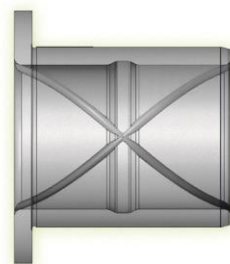
PE 1/0 U



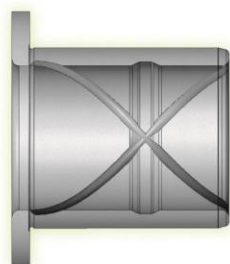
PF 1/0 U 1P



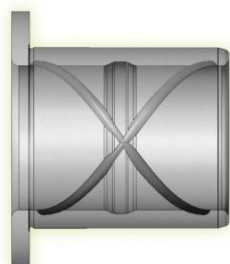
PD 1/0 NU



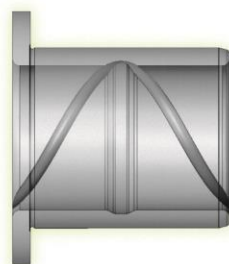
P 2/0 U



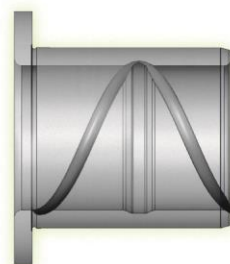
O 2/0 U 1P



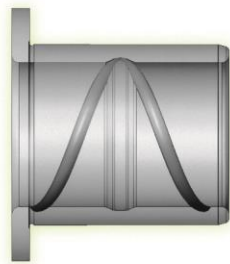
OE 2/0 NU



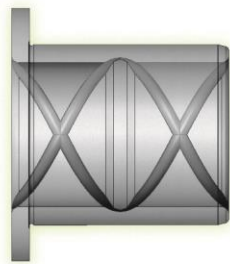
TE 1/8 U



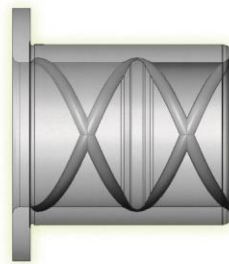
TH 1/8 U 1P



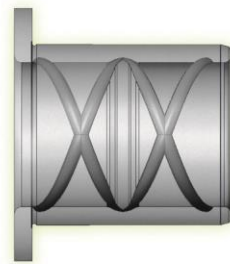
TF 1/8 NU



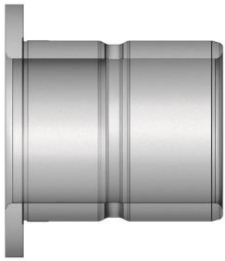
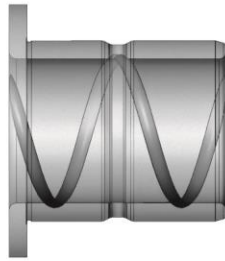
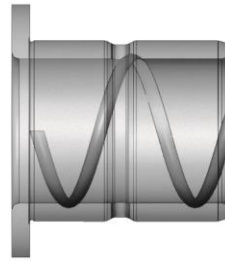
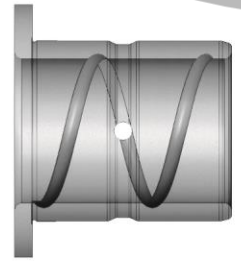
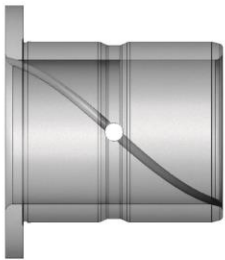
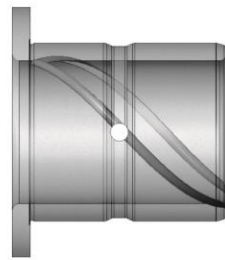
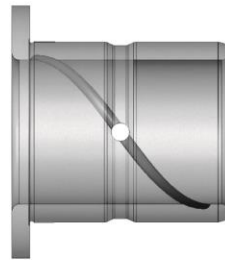
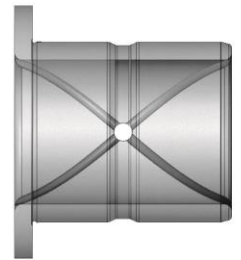
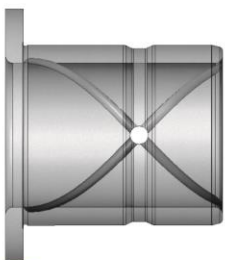
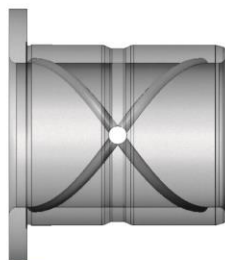
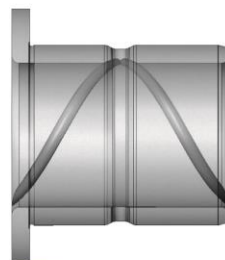
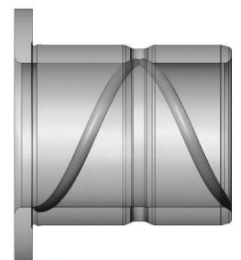
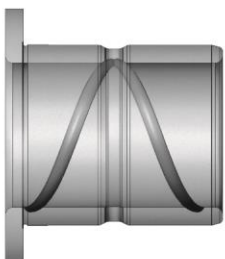
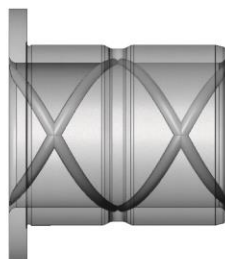
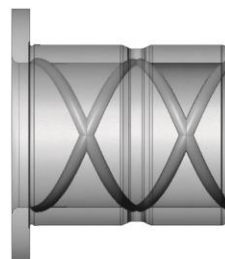
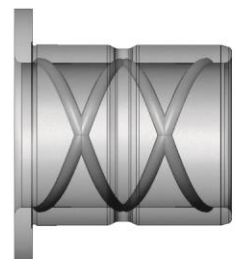
T 2/8 U



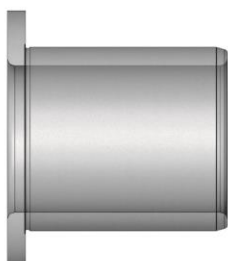
TI 2/8 U 1P



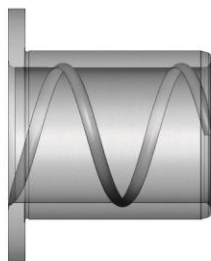
TG 2/8 NU

Gola Esterna Fori Ragnata

R GE

VB SP.U

VC SP.U 1P

VD SP.NU

CF 1/0 U

DA 1/0 U 1P

CD 1/0 NU

CG 2/0 U

DB 2/0 U 1P

CE 2/0 NU

SA 1/8 U

SD 1/8 U 1P

S 1/8 NU

SF 2/8 U

SE 2/8 U1P

SG 2/8 NU

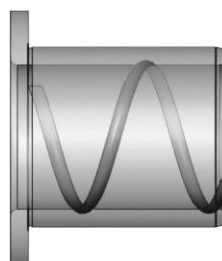
Liscia ragnata



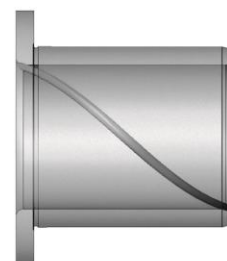
A LISCIA



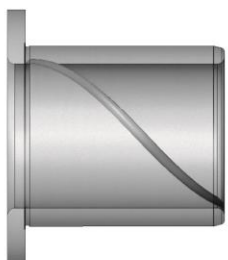
B SP.U



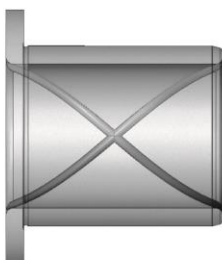
C SP.U 1P



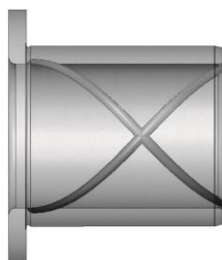
CB 1/0 U



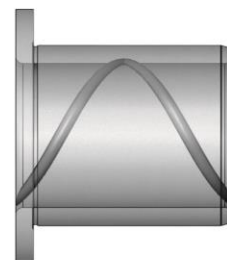
CC 1/0 U 1P



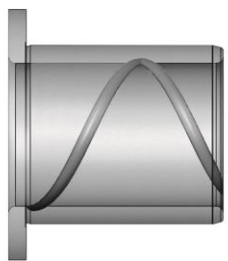
Q 2/0 U



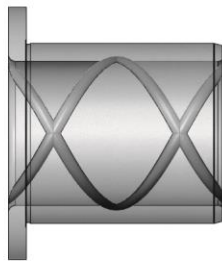
QB 2/0 U 1P



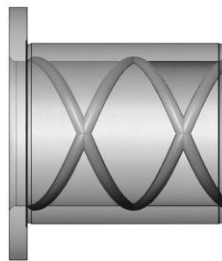
VA 1/8 U



V 1/8 U 1P

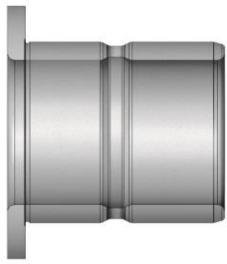


ZA 2/8 U

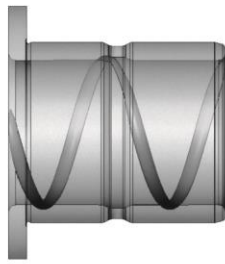


Z 2/8 U 1P

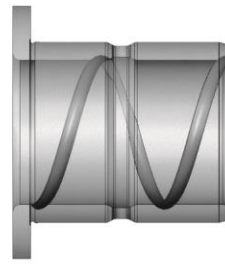
Gola Fori Ragnata



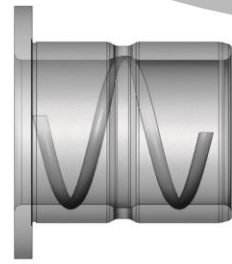
D GF



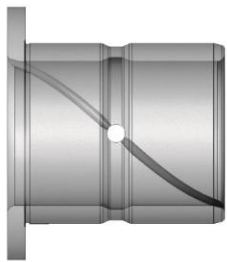
E SP.U



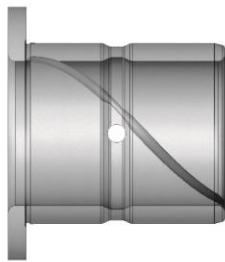
F SP.U



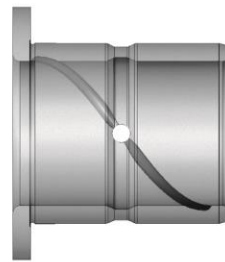
EA SP.NU



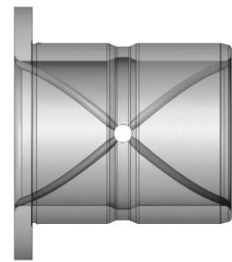
EC 1/0 U



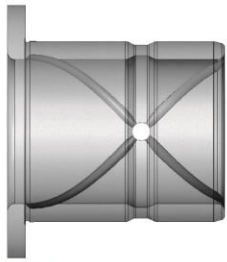
ED 1/0 U 1P



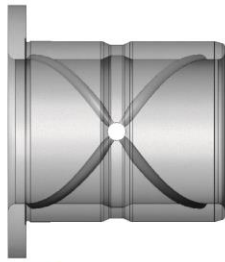
EB 1/0 NU



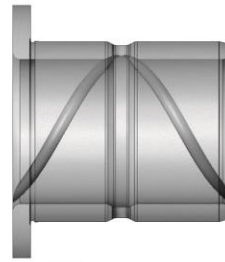
N 2/0 U



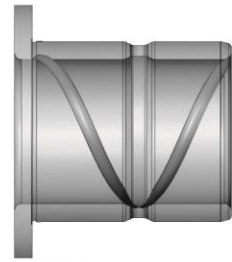
EE 2/0 U 1P



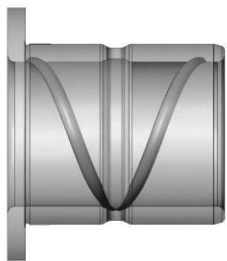
M 2/0 NU



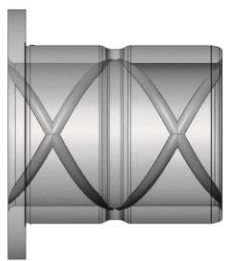
GC 1/8 U



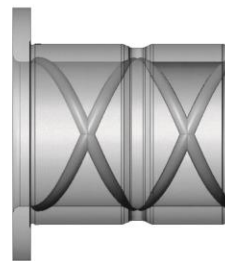
UC 1/8 U 1P



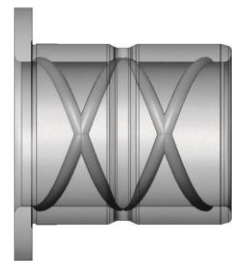
UA 1/8 NU



GB 2/8 U



UB 2/8 U 1P



U 2/8 NU